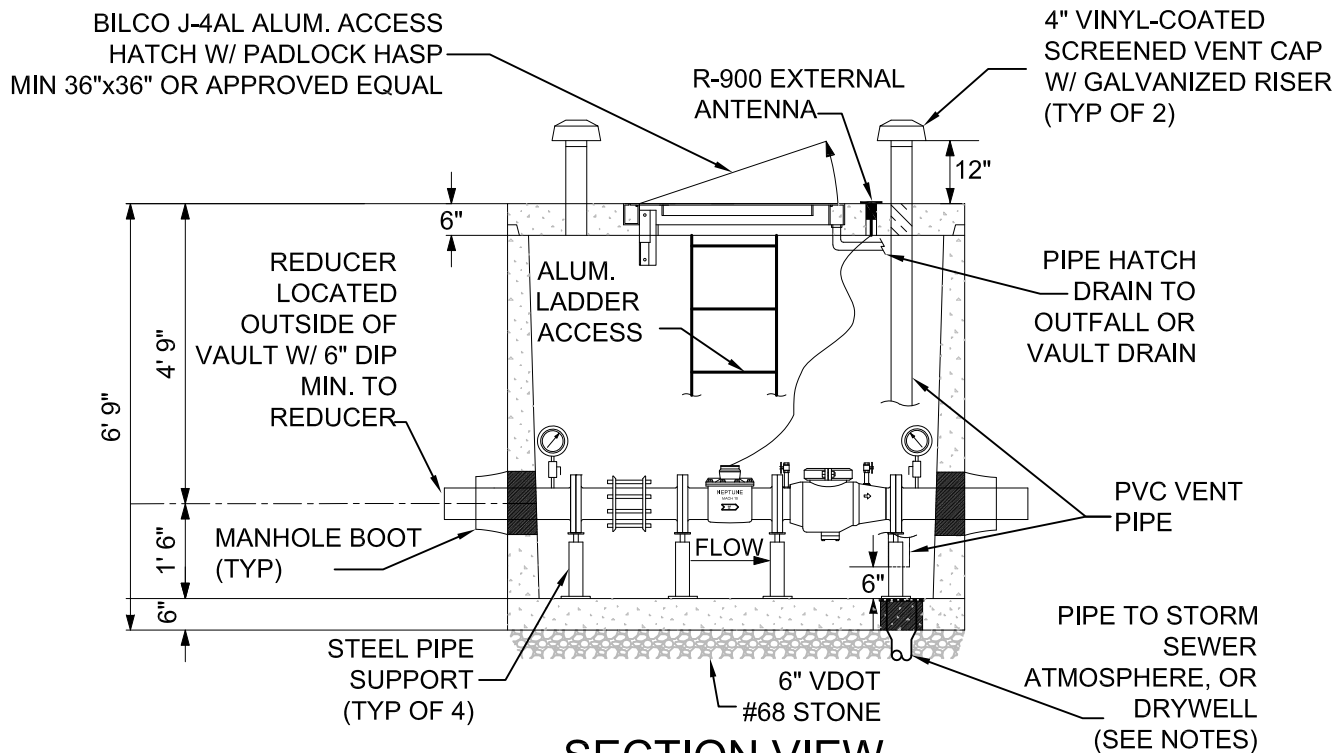


PLAN VIEW



SECTION VIEW

NOTES:

1. NEPTUNE MACH 10 ULTRASONIC METER w/PROCORDER R-900i RADIO-READ MODULE.
2. WILKINS #310 SINGLE CHECK VALVE OR APPROVED EQUAL
3. (2) 4 1/2" ASHCROFT #1082 PRESSURE GAUGE (0-300 PSI) w/GAUGE COCK OR APPROVED EQUAL
4. TEMPORARY CAP AND BLOW OFF ARE NECESSARY PAST THE BYPASS ASSEMBLY FOR TESTING PURPOSES.
5. WHERE APPROVED BY THE AUTHORITY TO BE LOCATED IN SUBJECT TO TRAFFIC, VAULT SHALL BE RATED FOR H-20 LOADING WITH BILCO J-H20 HATCH OR APPROVED EQUAL.
6. DRYWELL SHALL BE 4' DIAMETER X 4' DEEP VDOT #57 STONE WRAPPED WITH MIRAFI N-SERIES NON-WOVEN POLYPROPYLENE GEOTEXTILE.



No.	Date
1	June 20, 2025
2	
3	
4	

FIRE FLOW METER INSTALLATION

Detail:

FM-1A